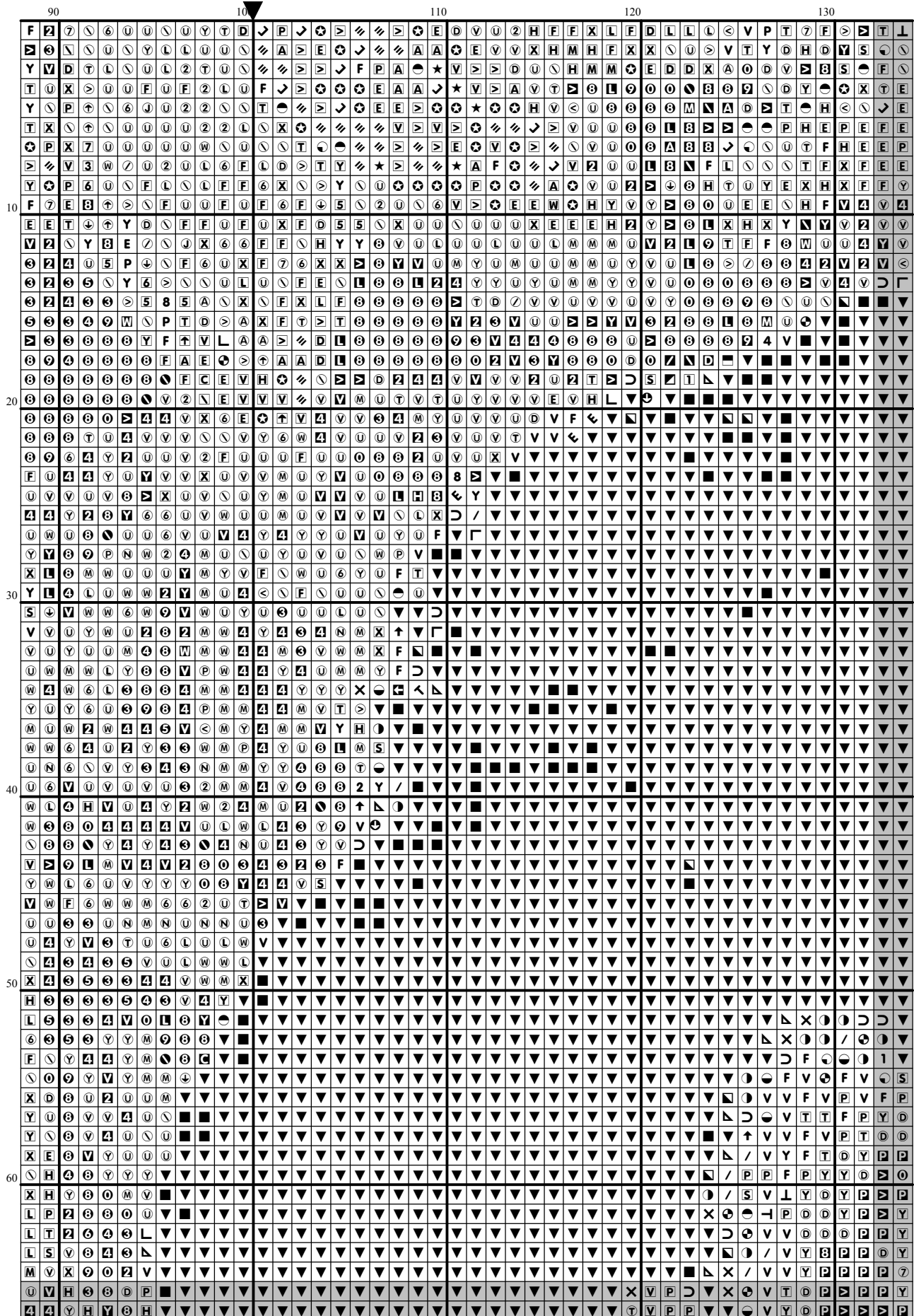
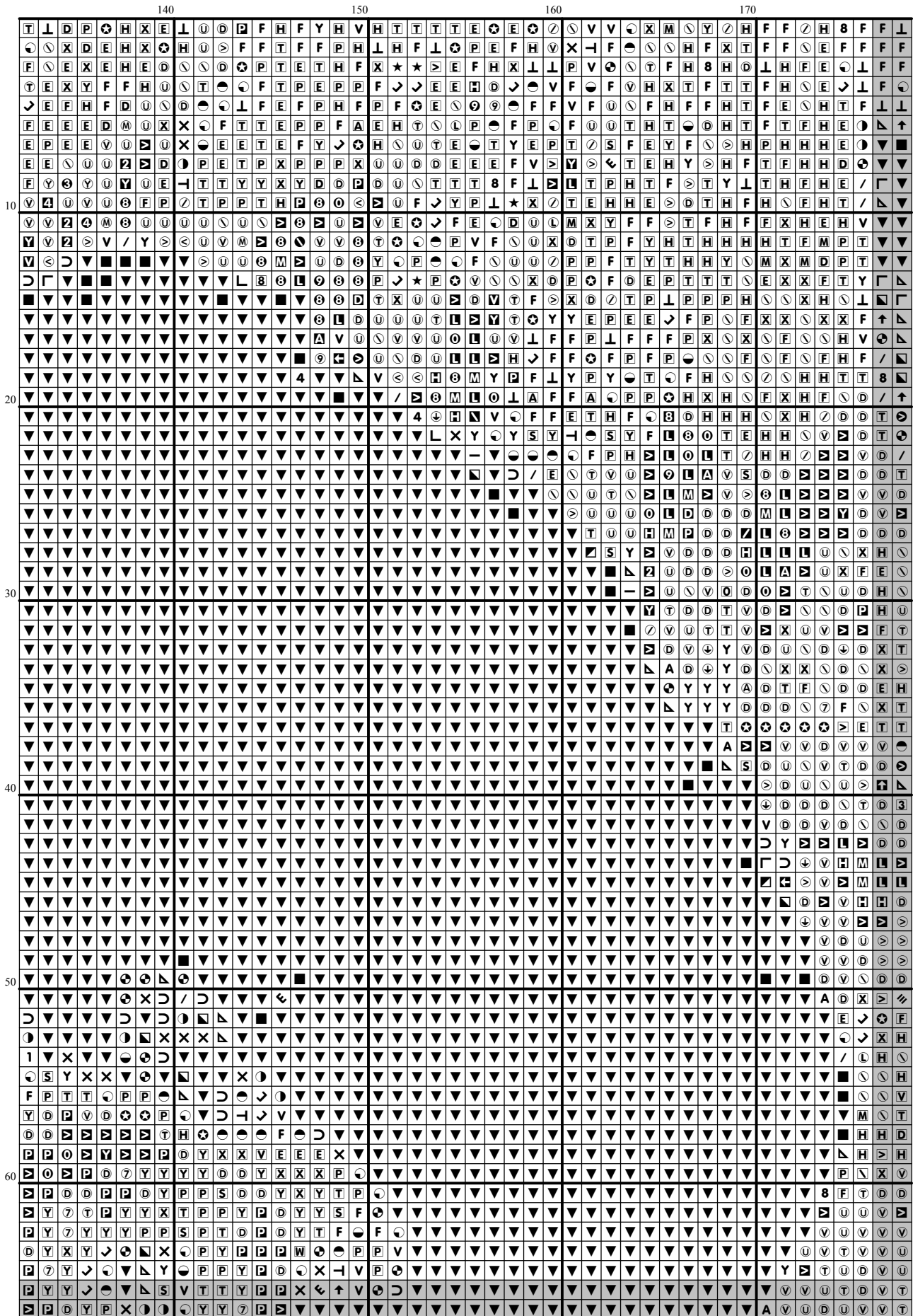
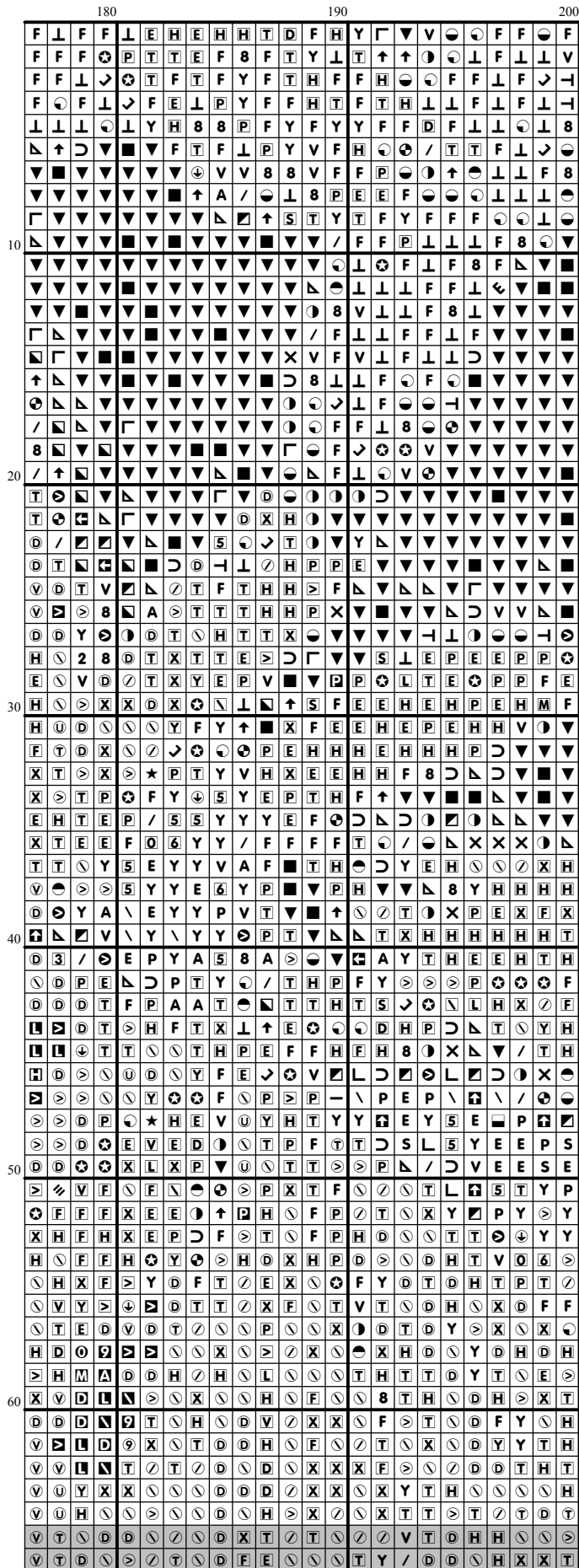


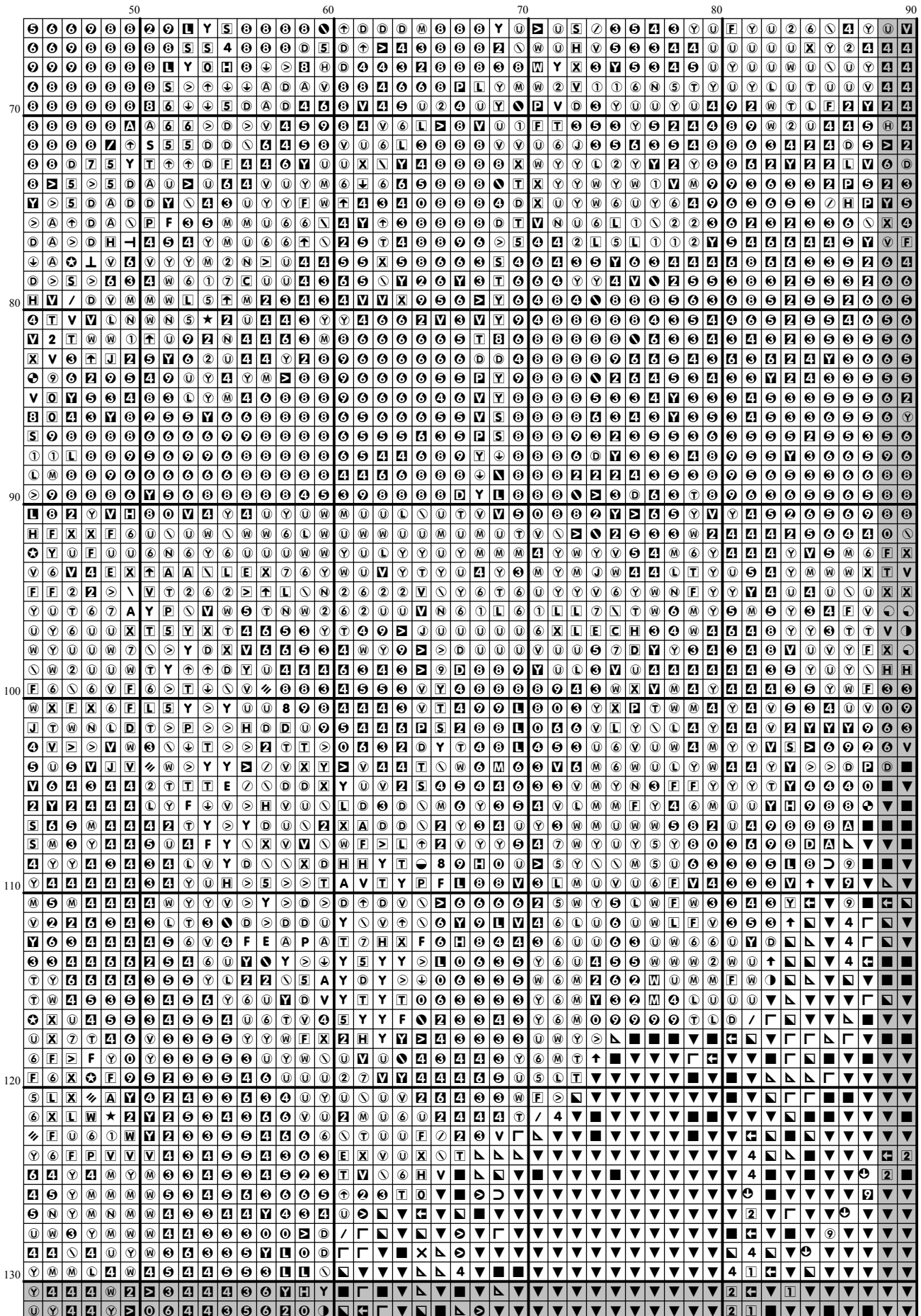
[illegible]

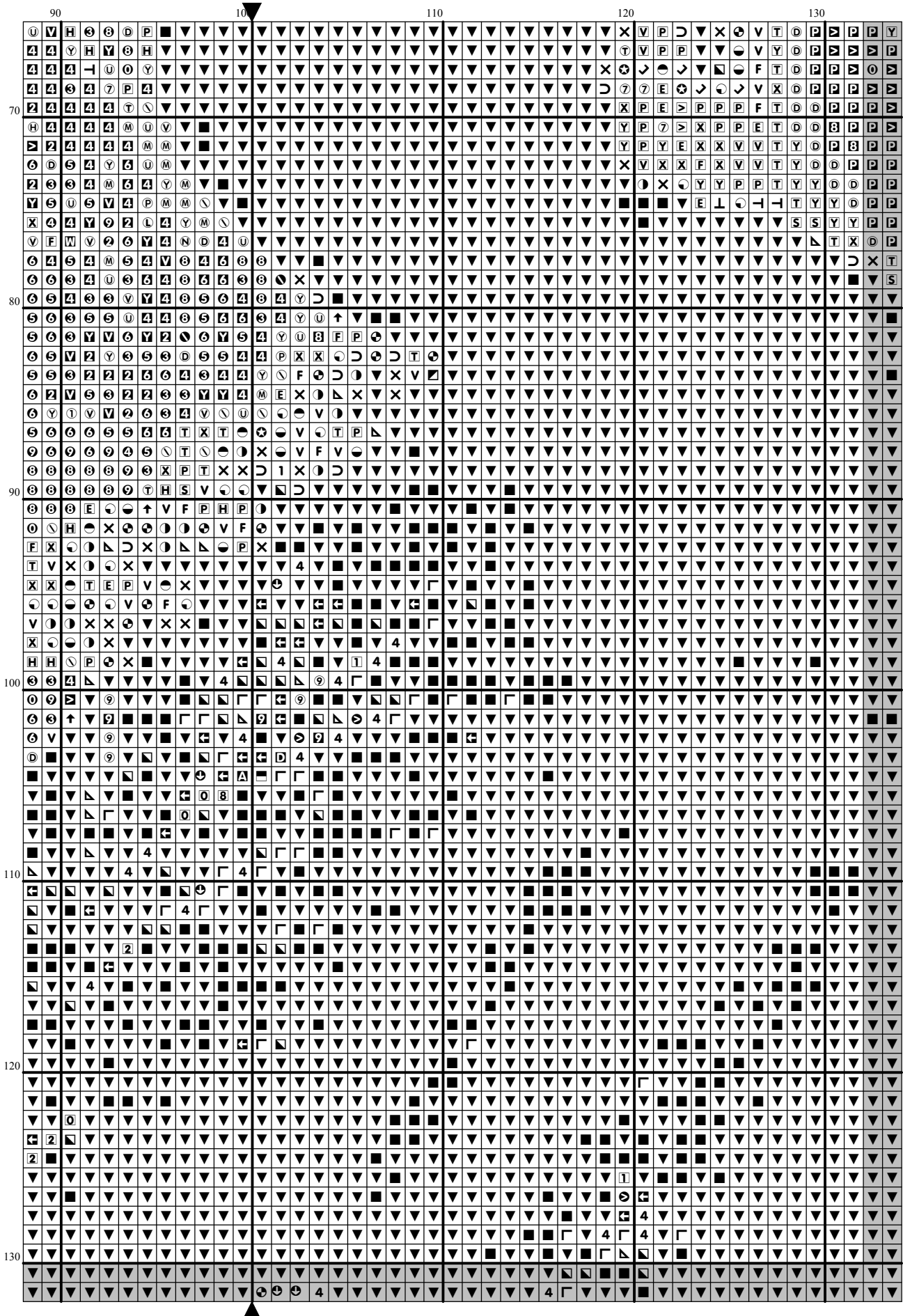


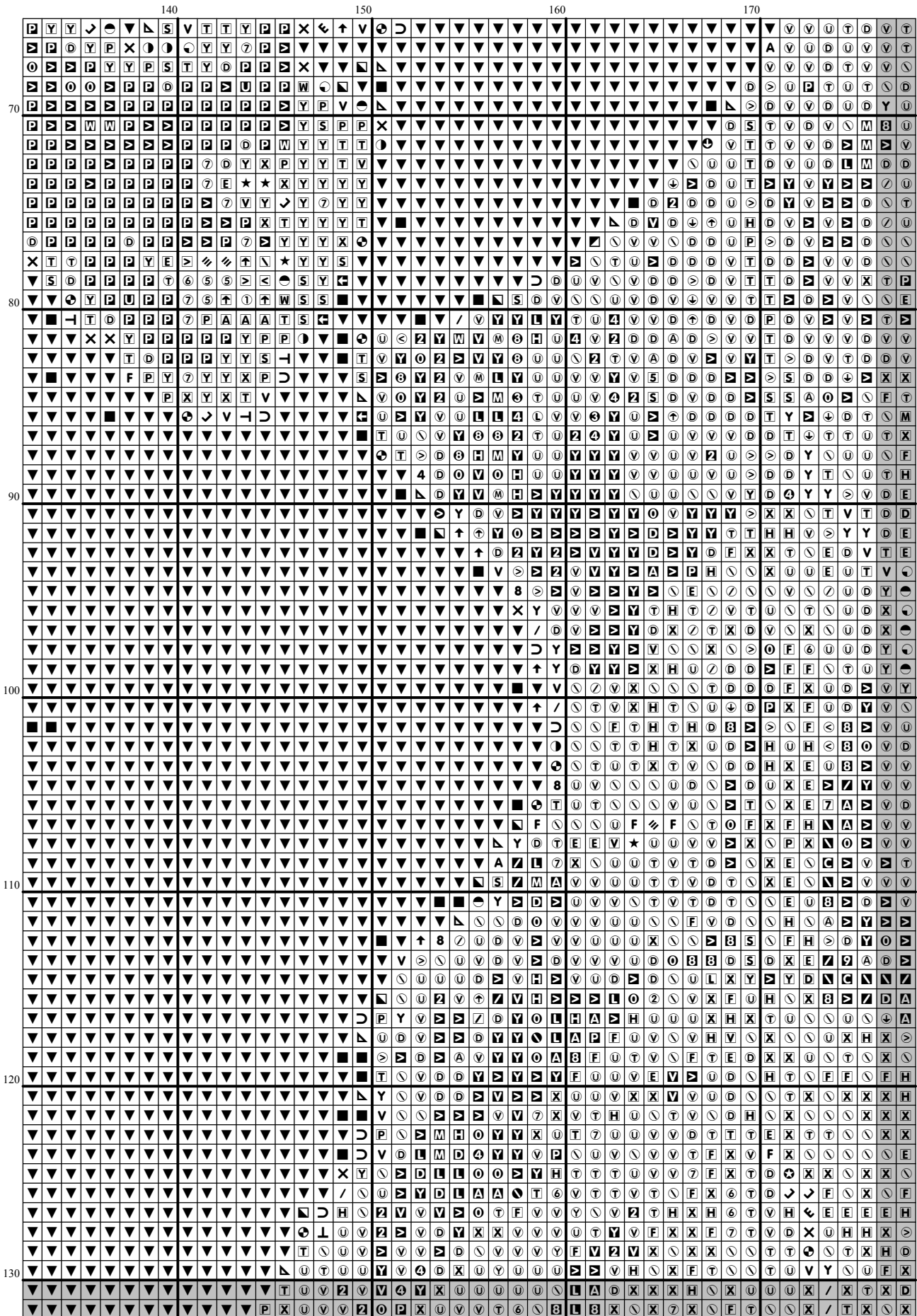


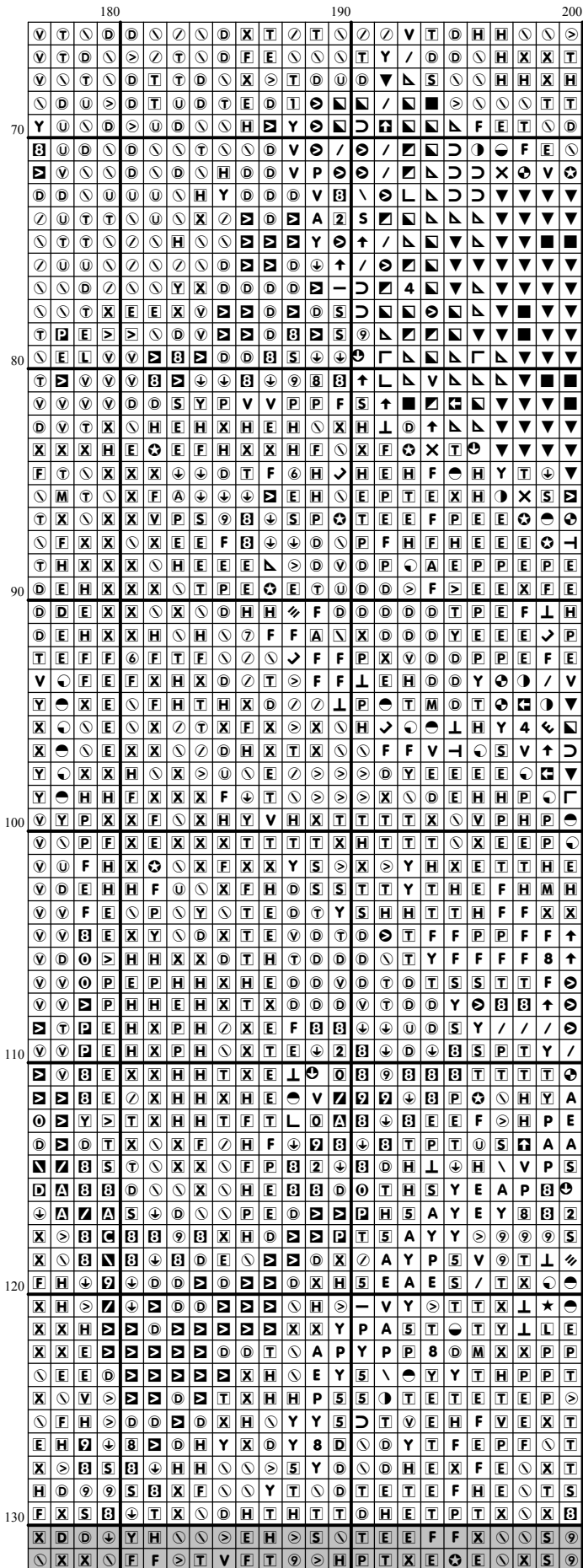


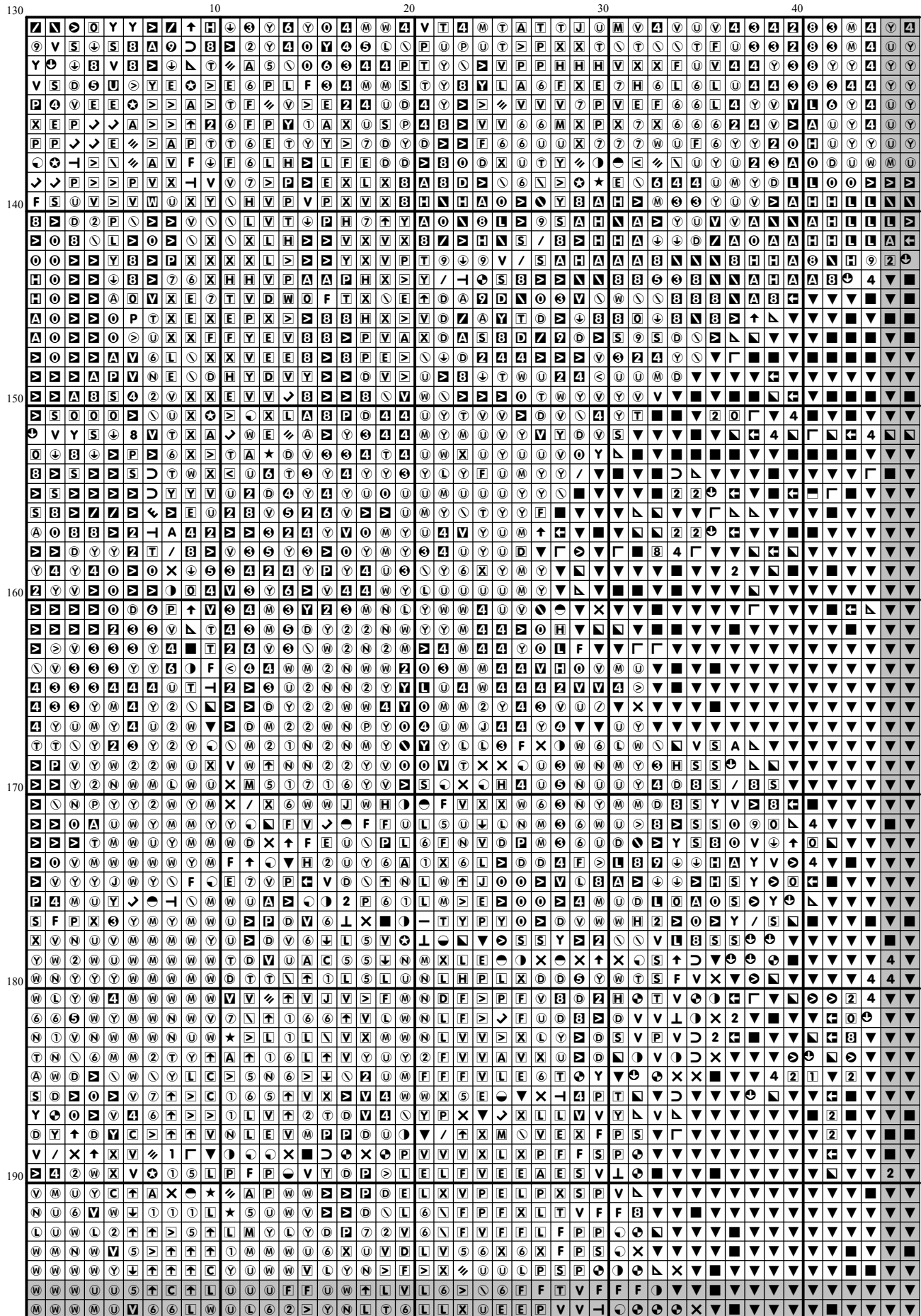
[illegible]

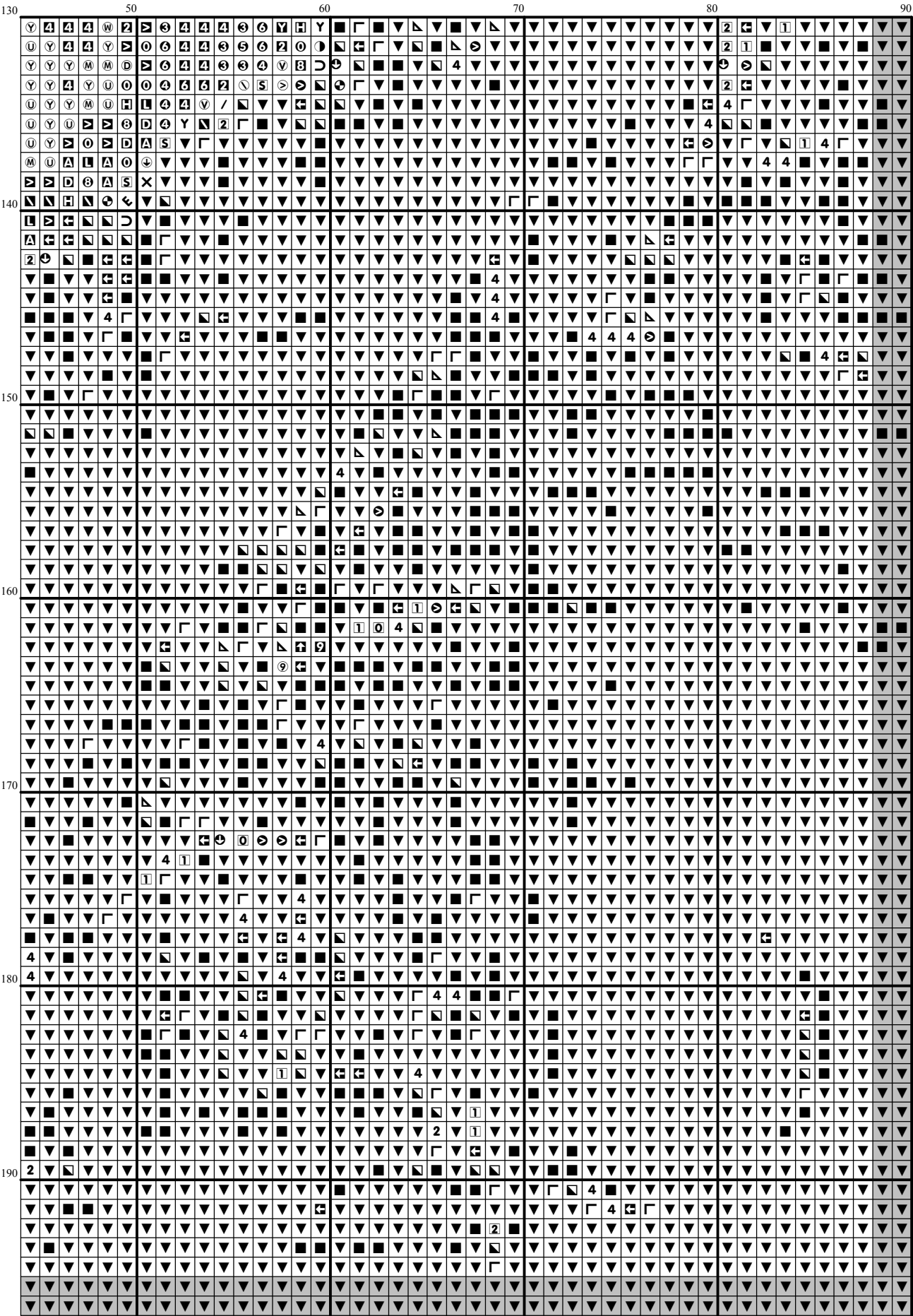


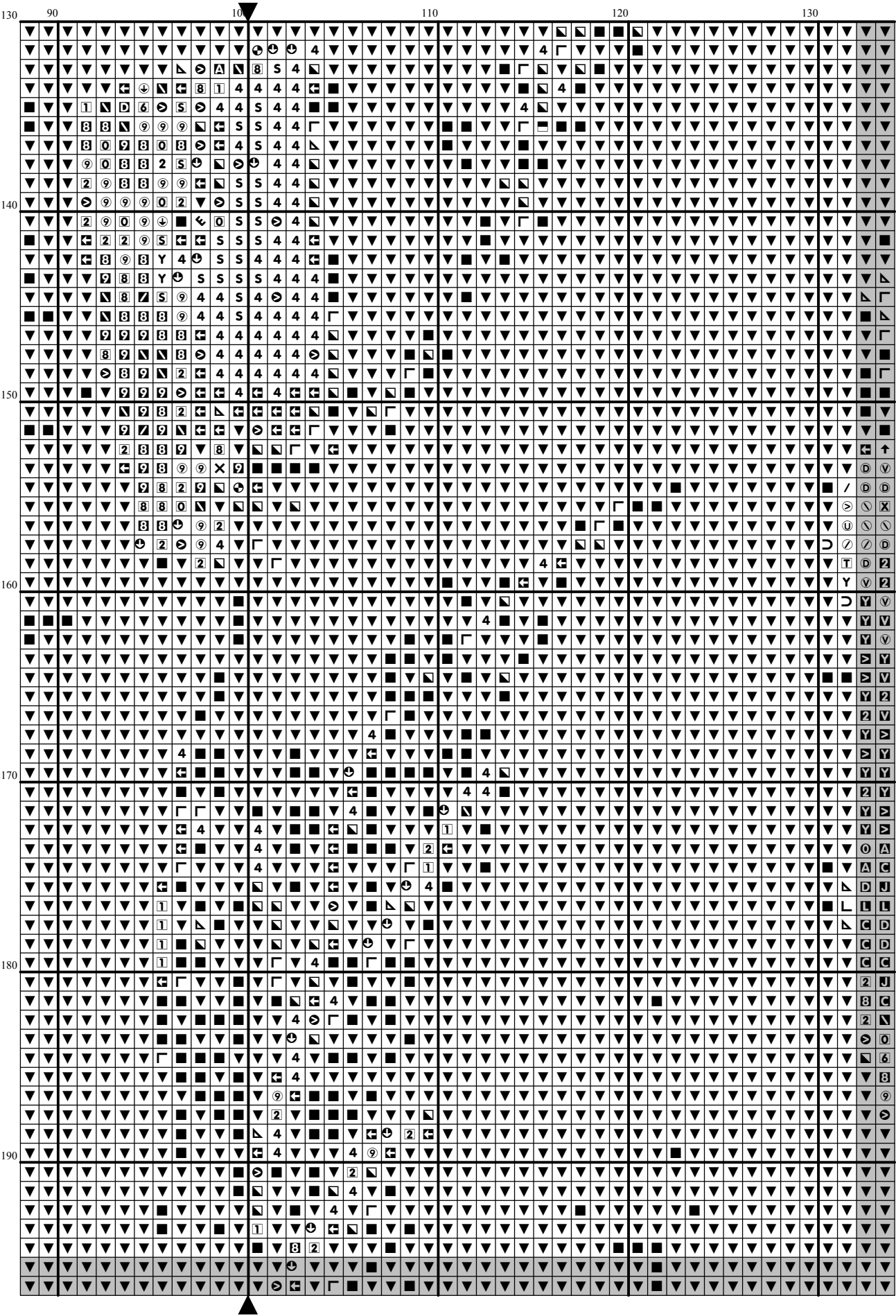


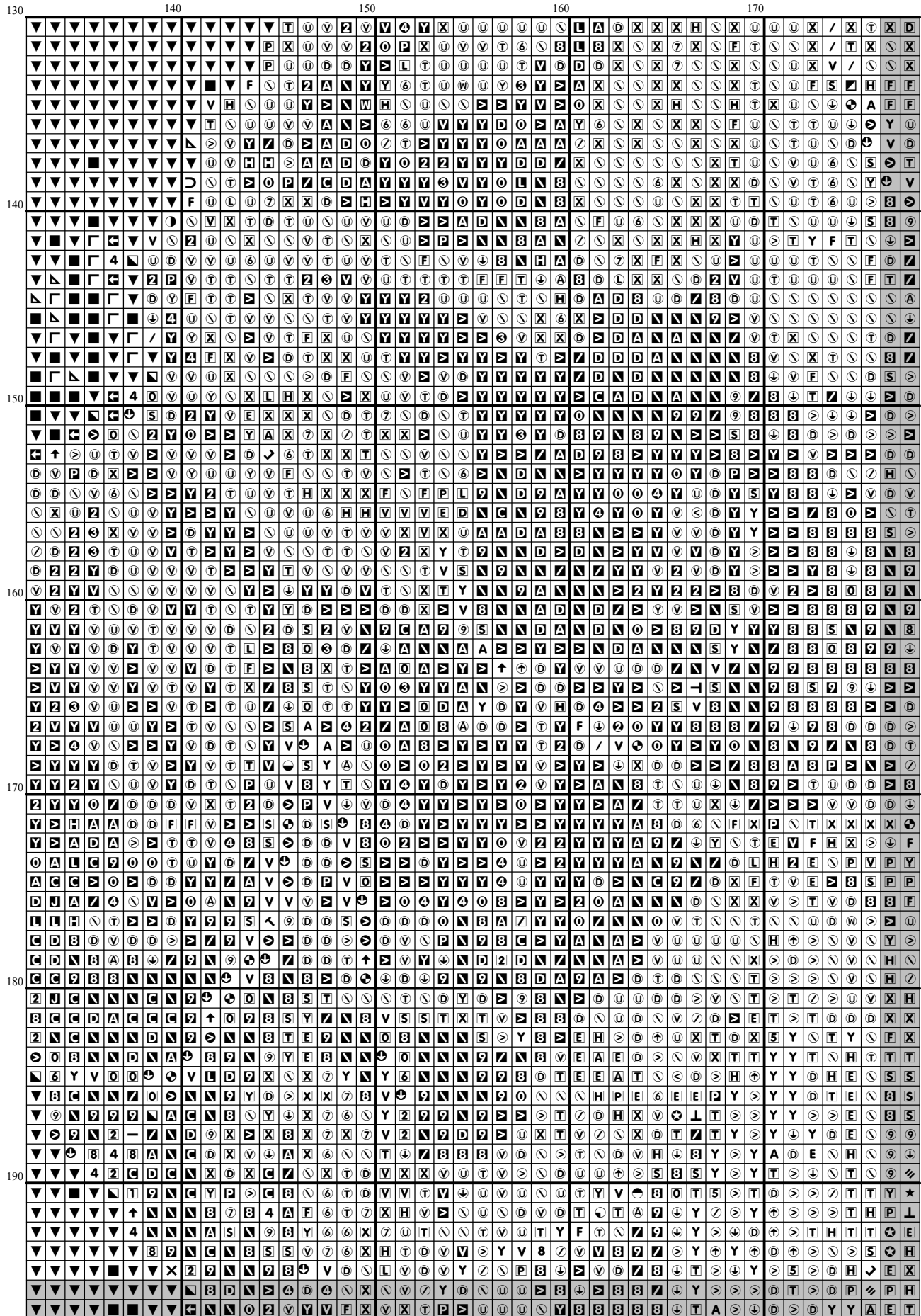


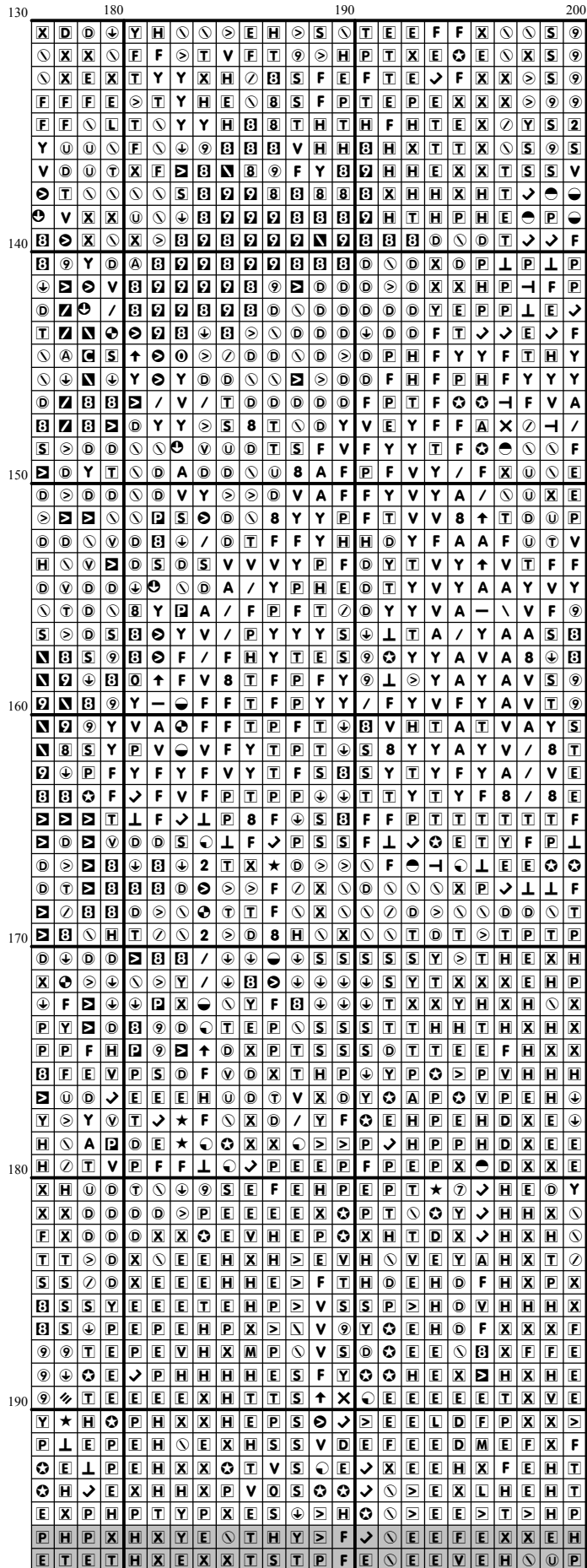




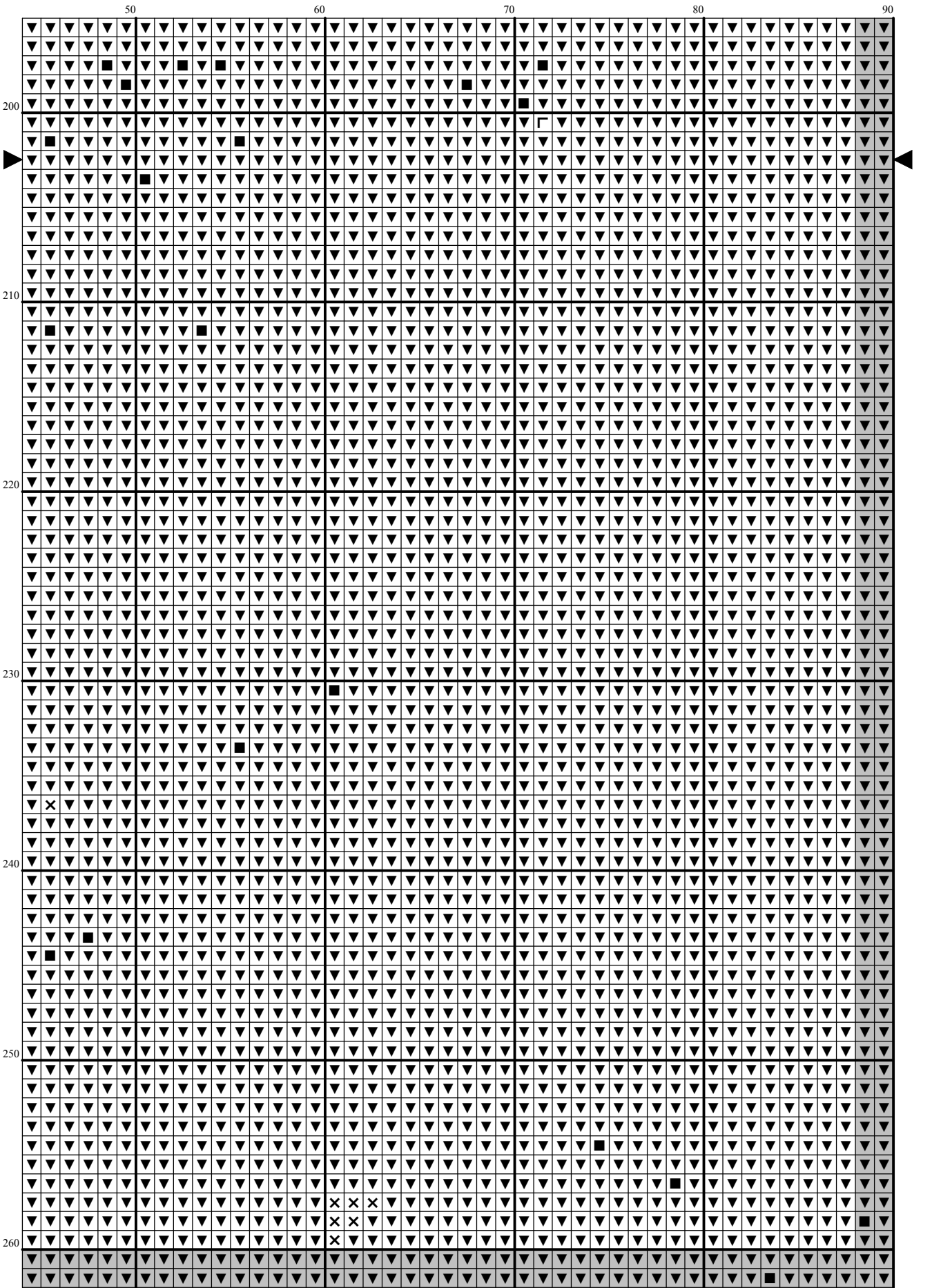


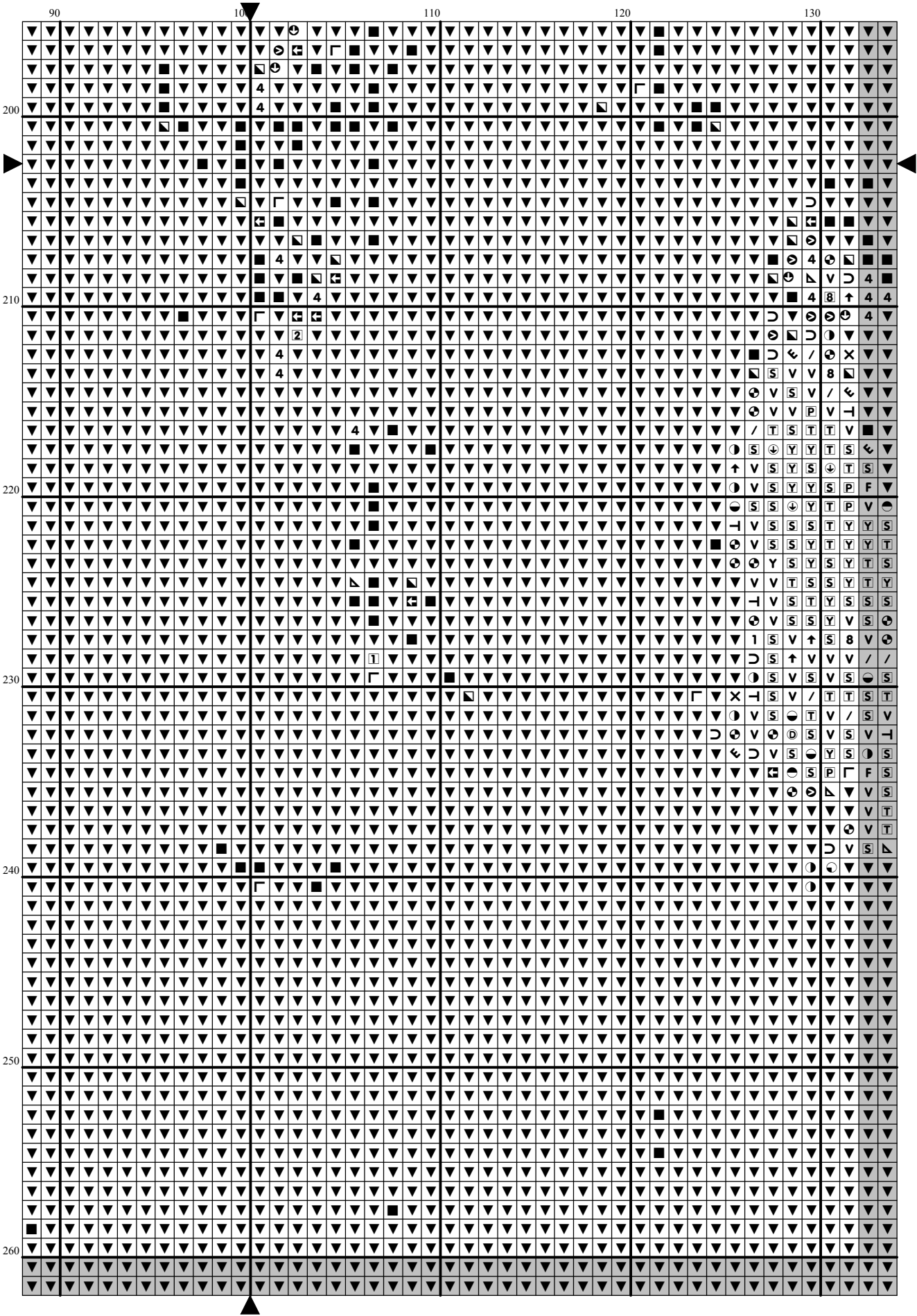


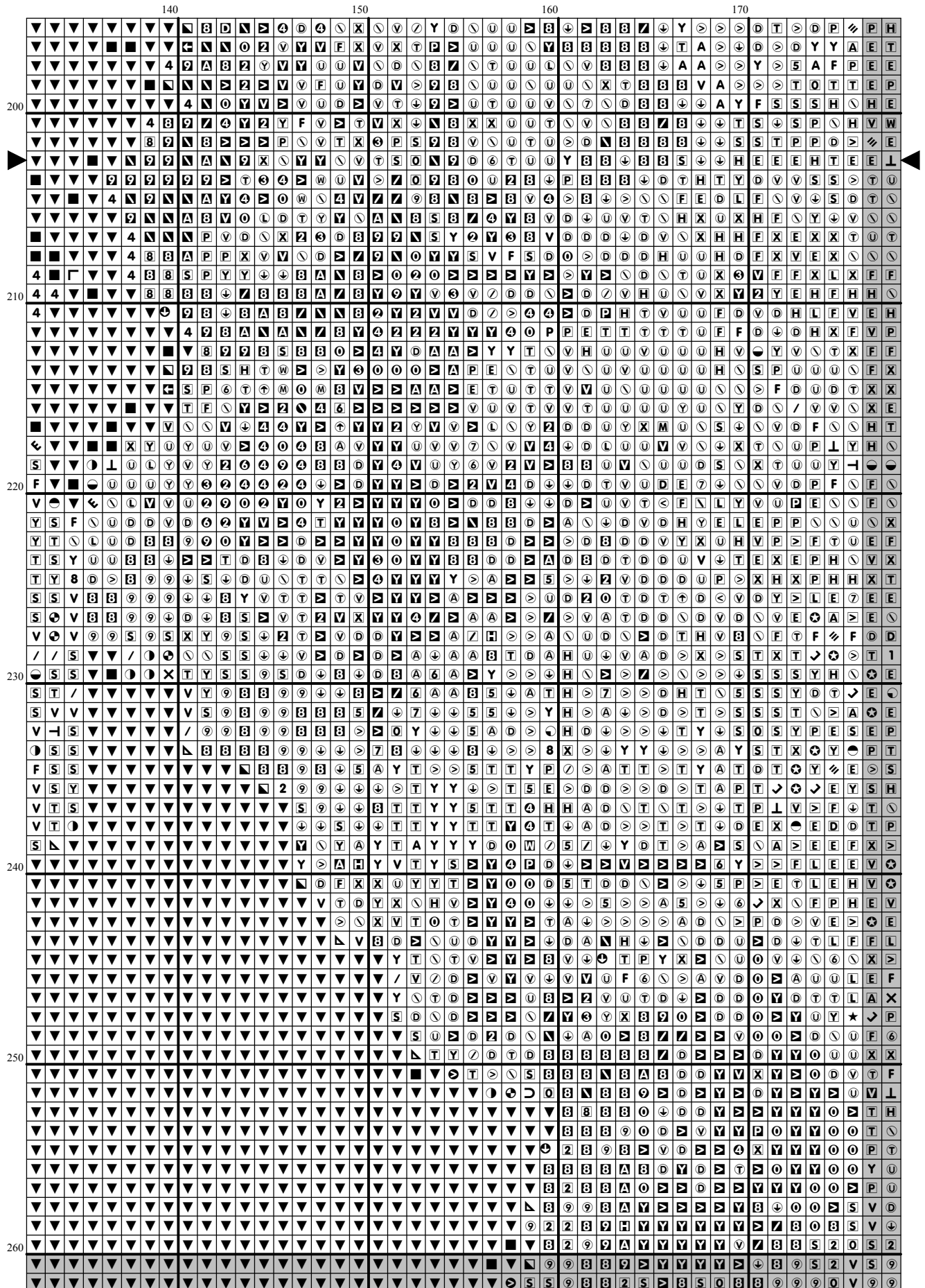


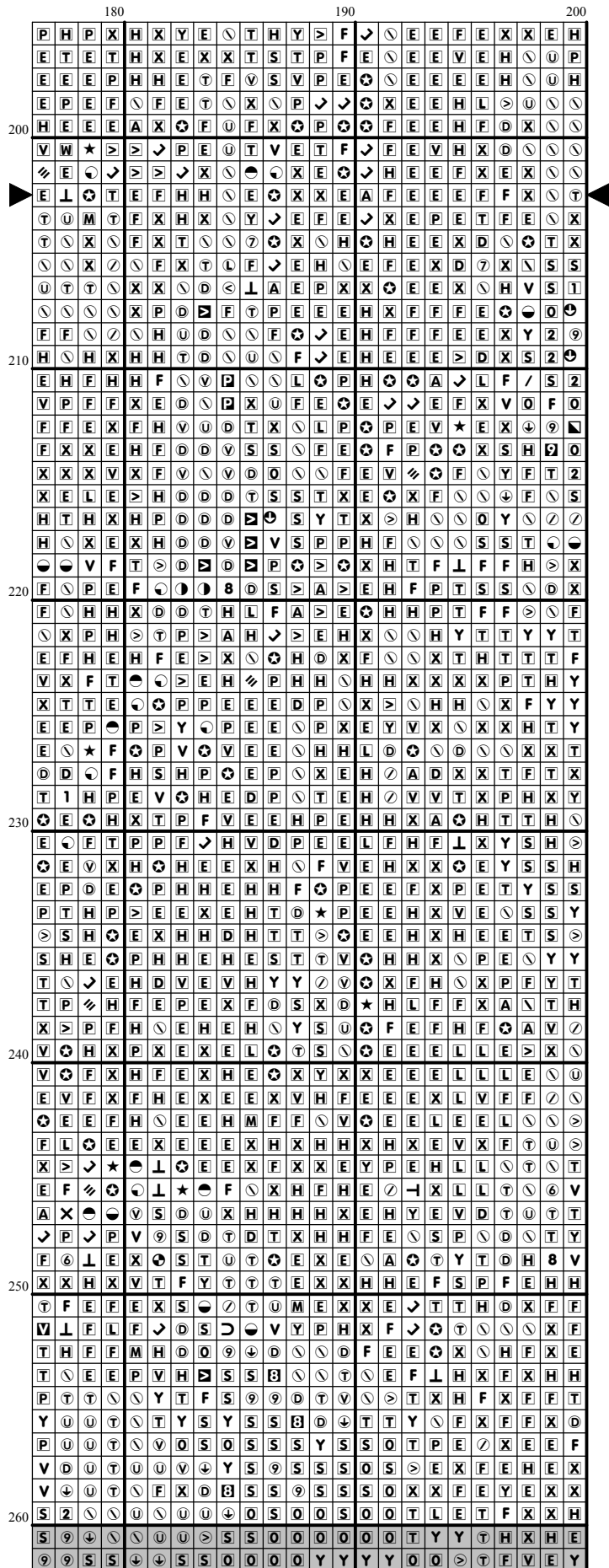


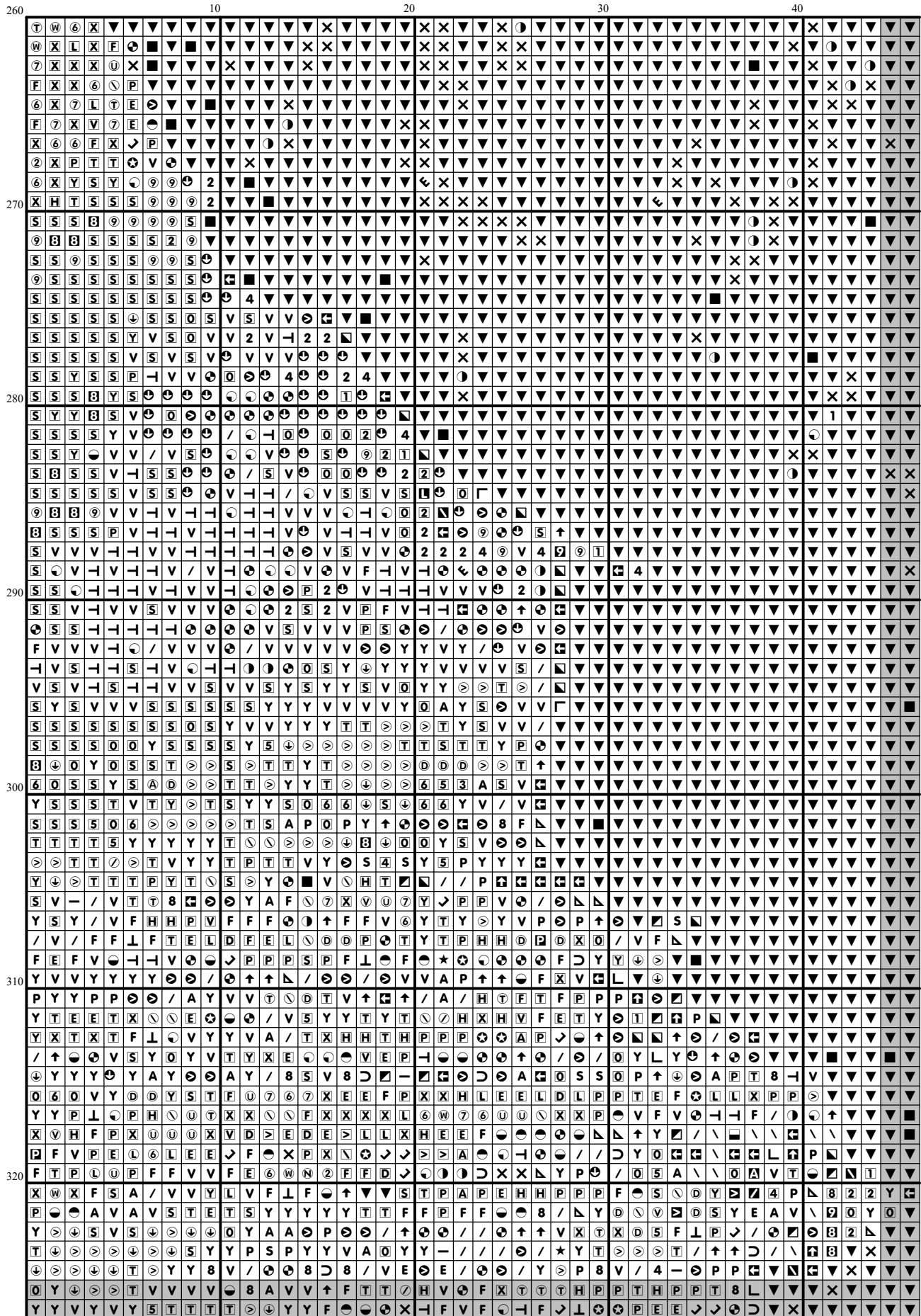
[illegible]

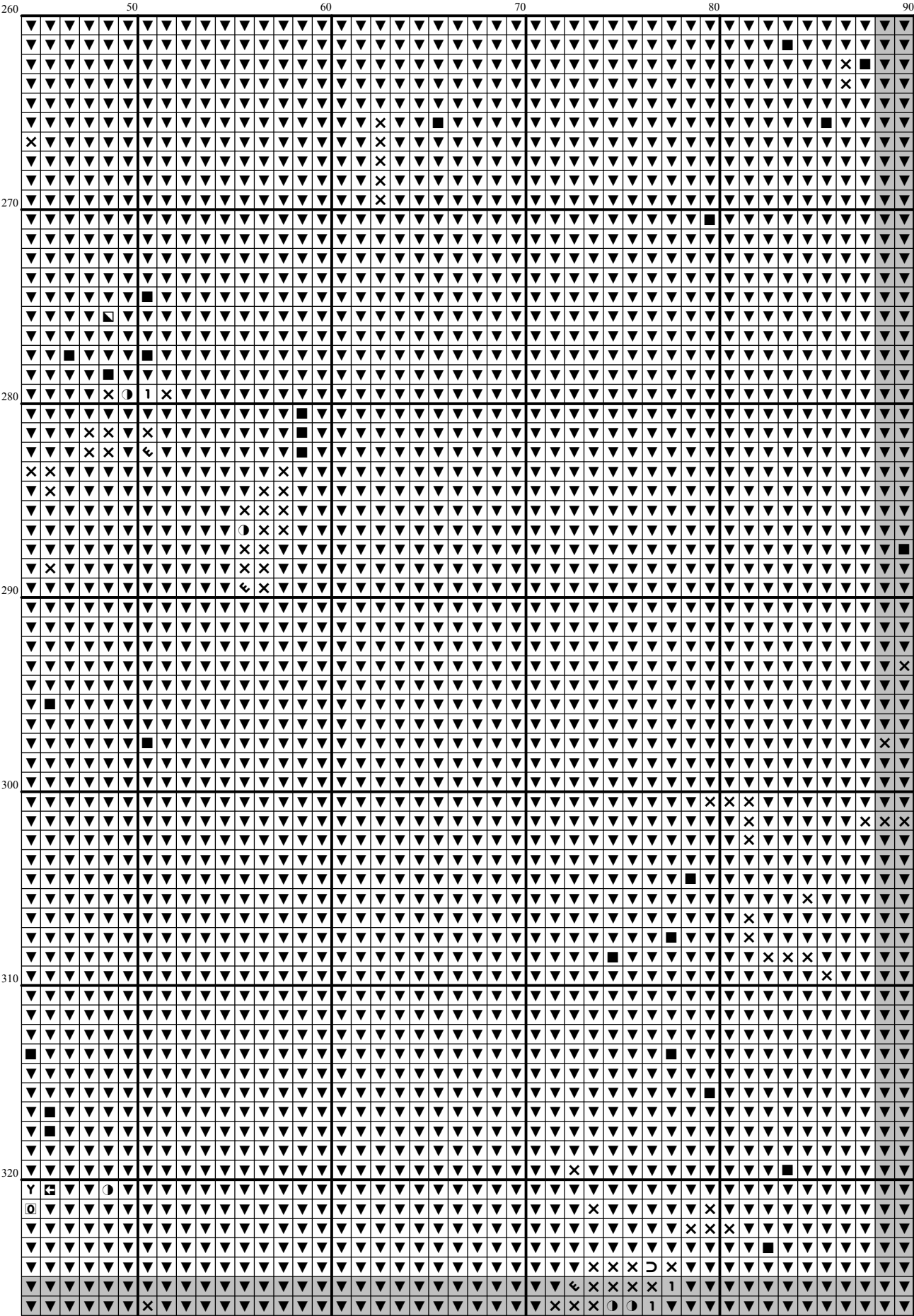


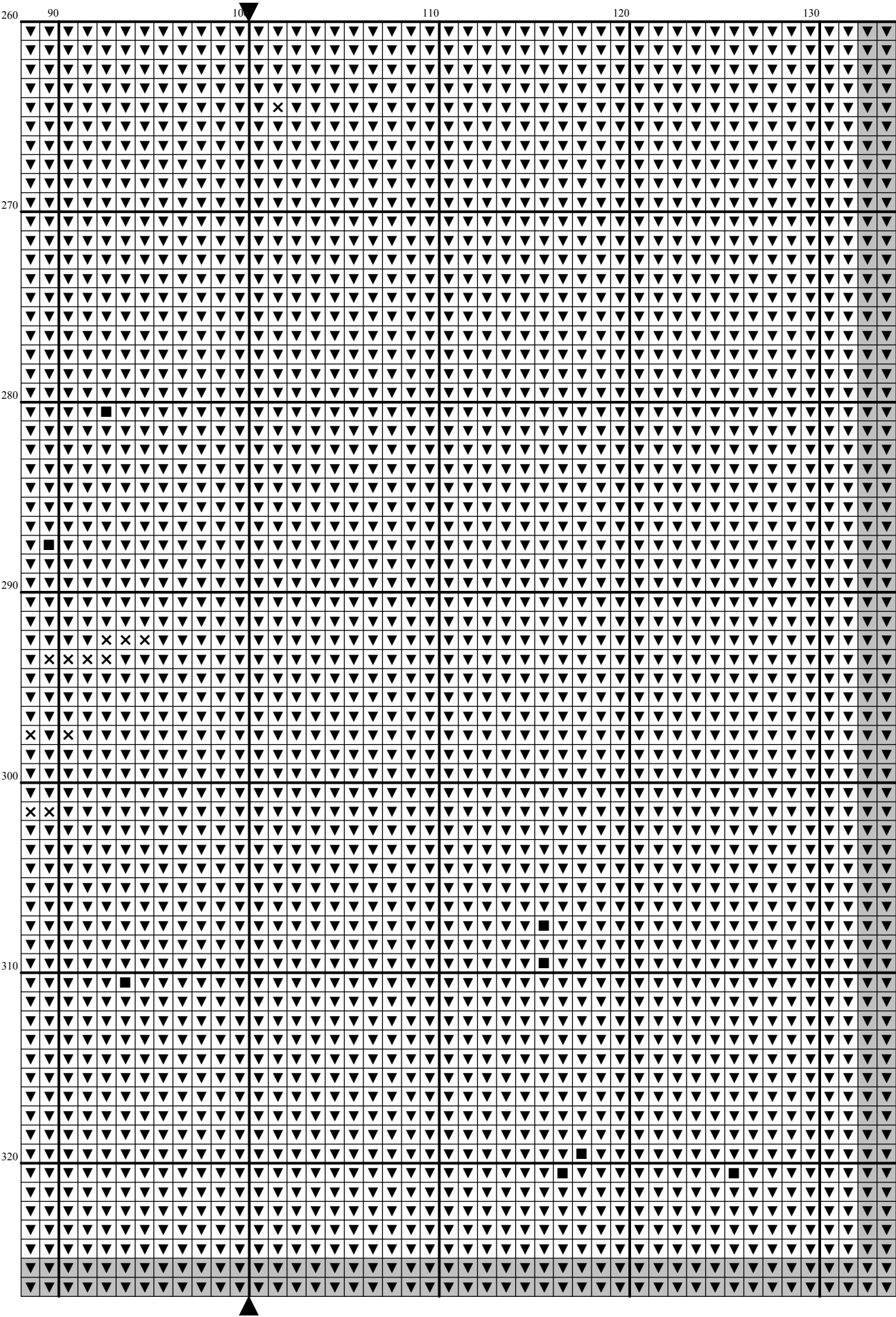


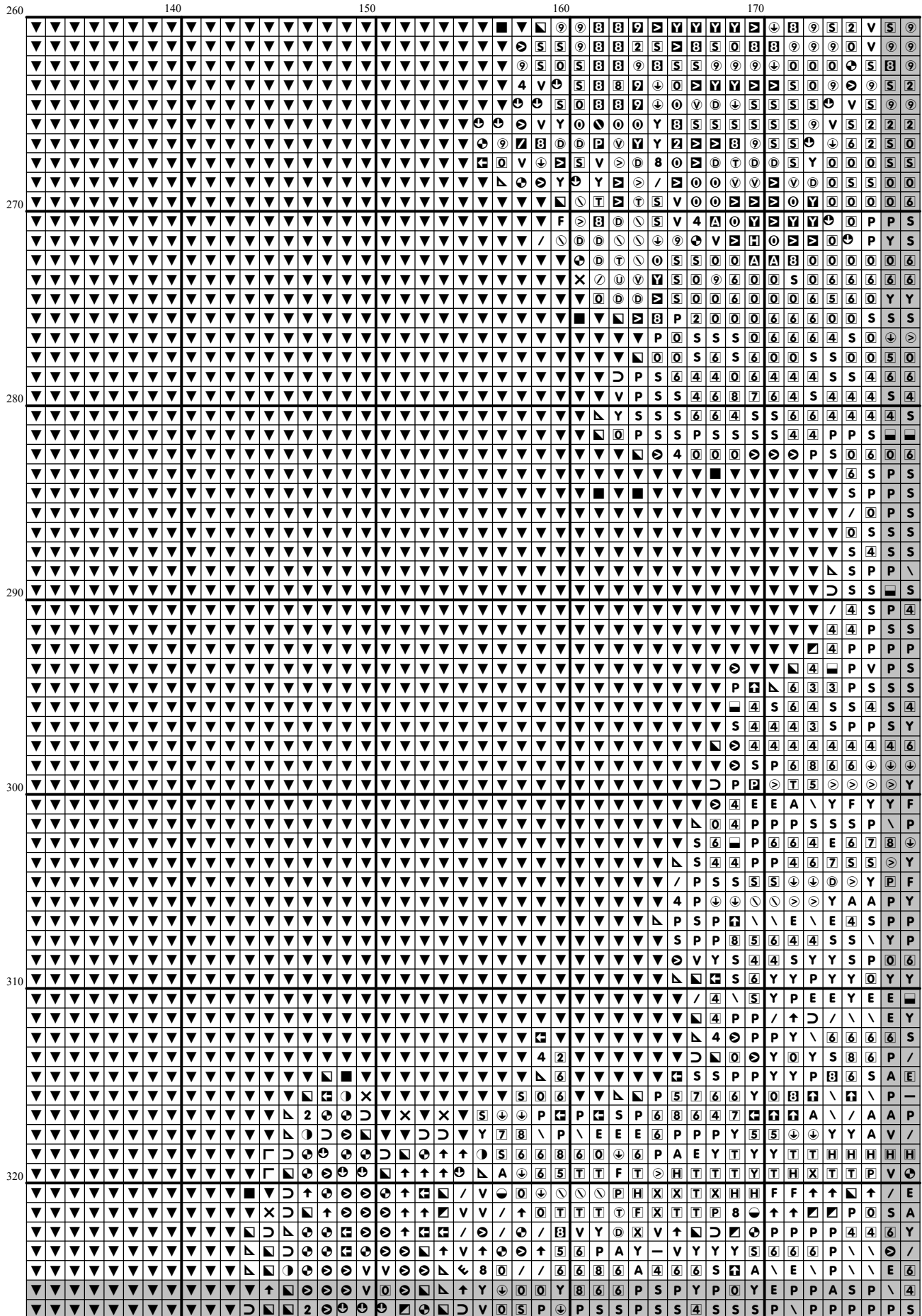


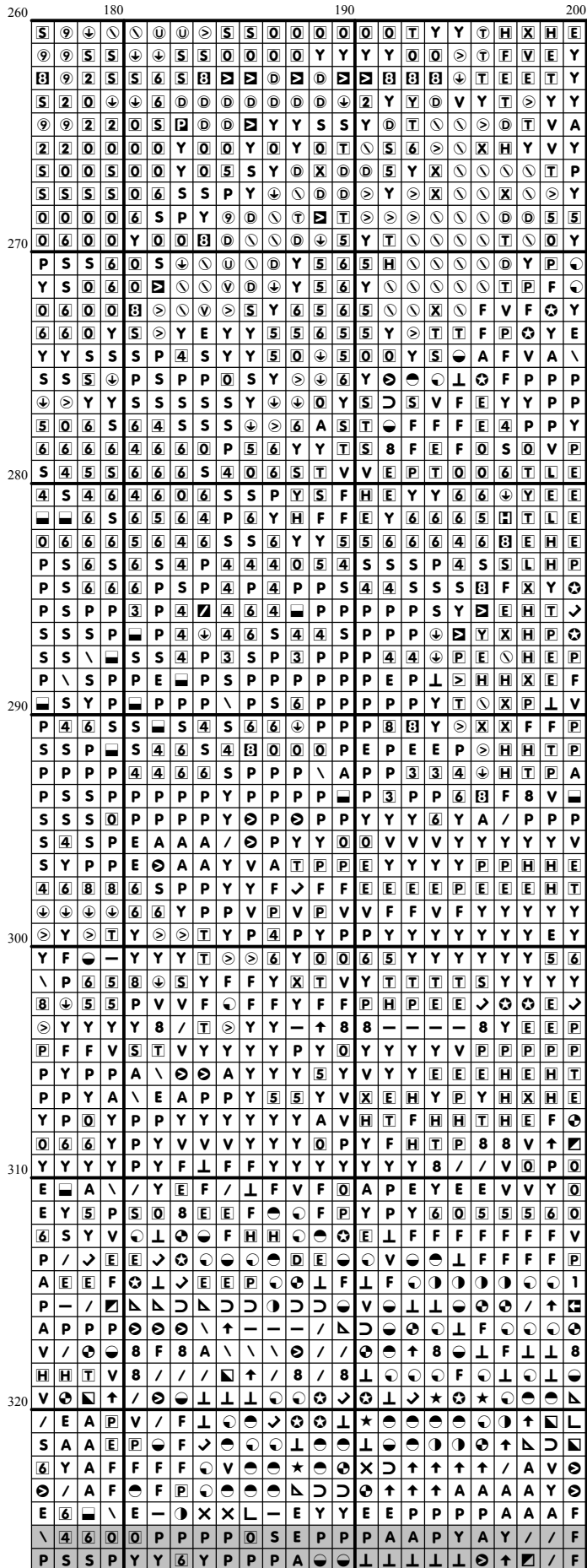


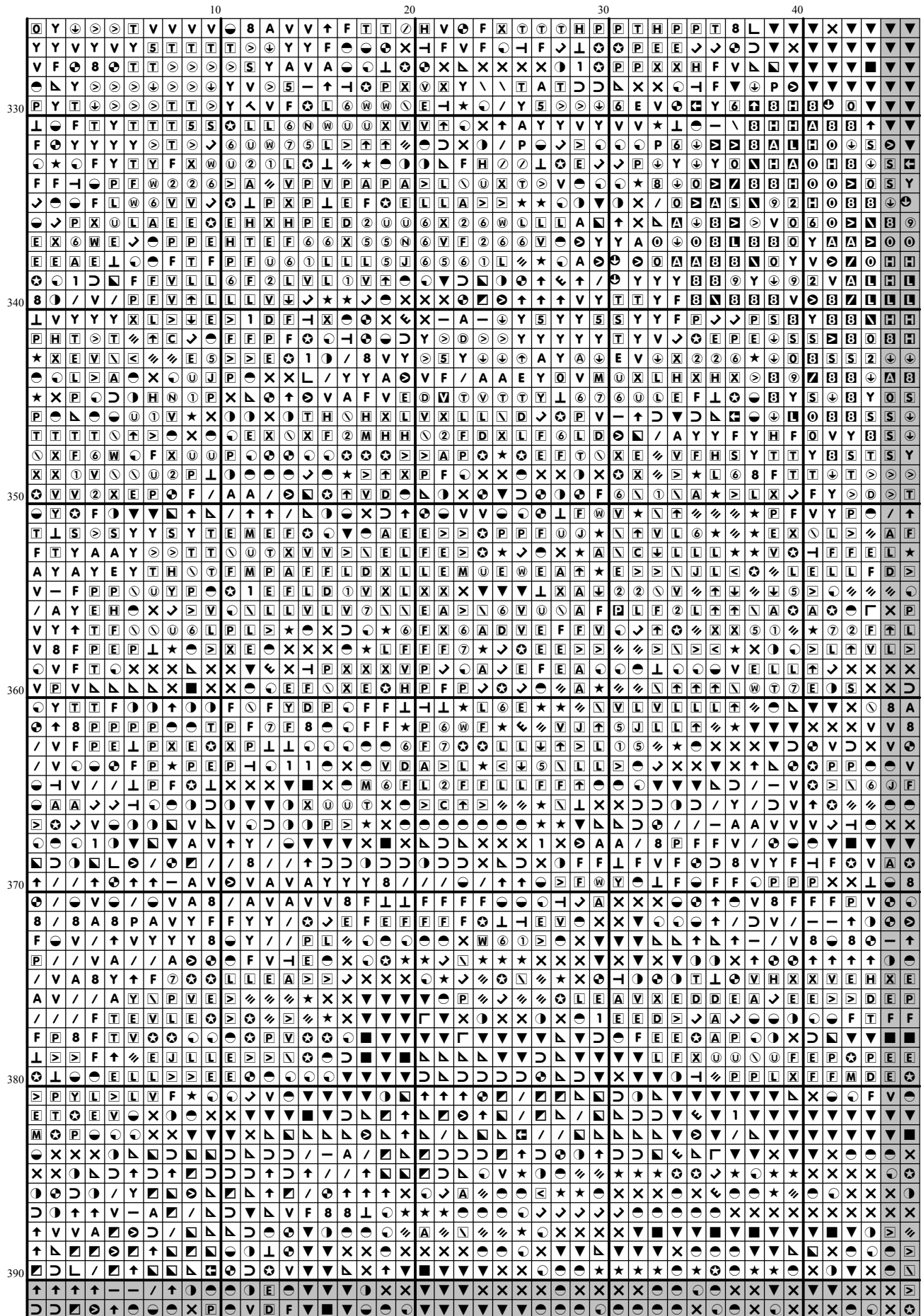


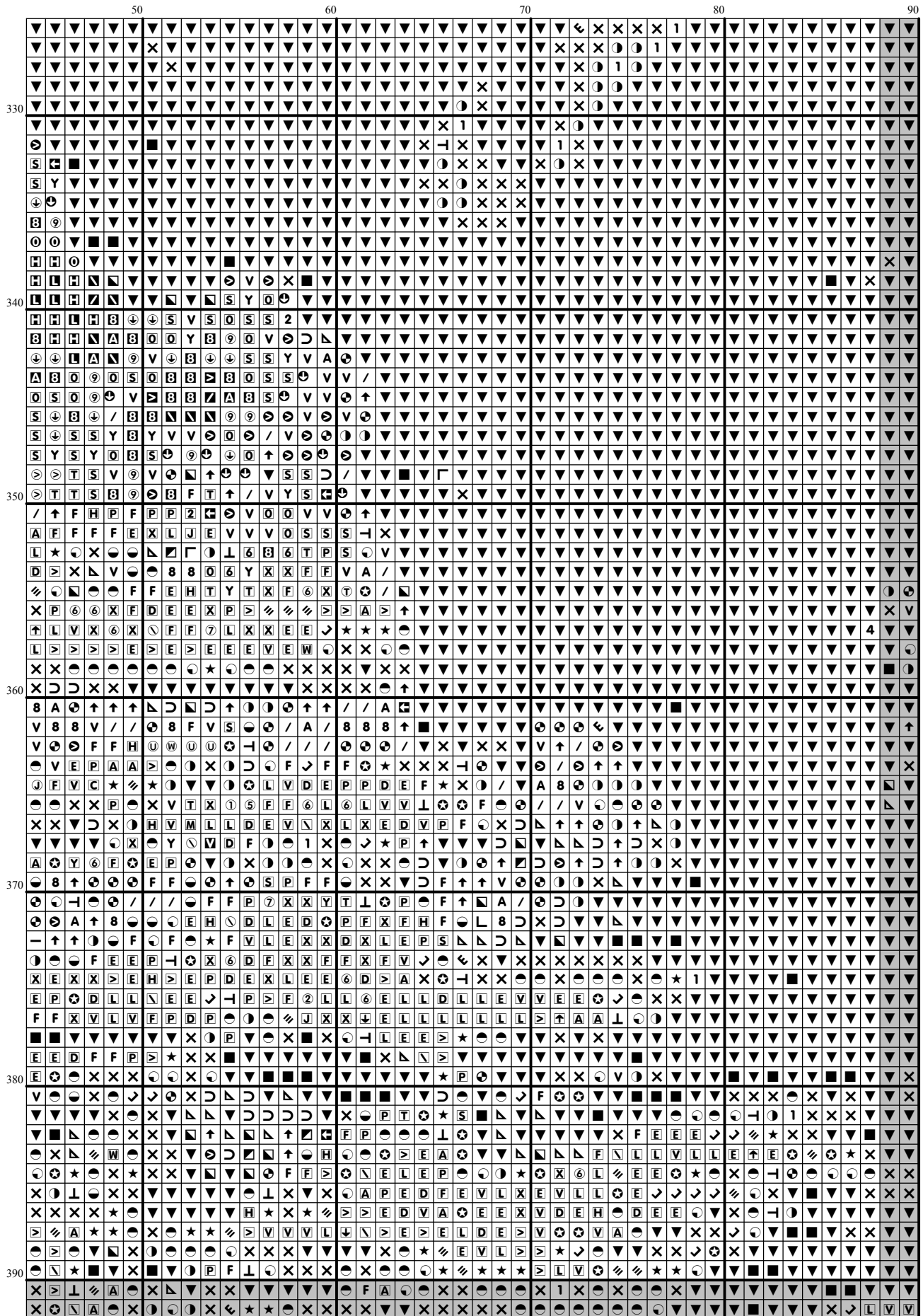


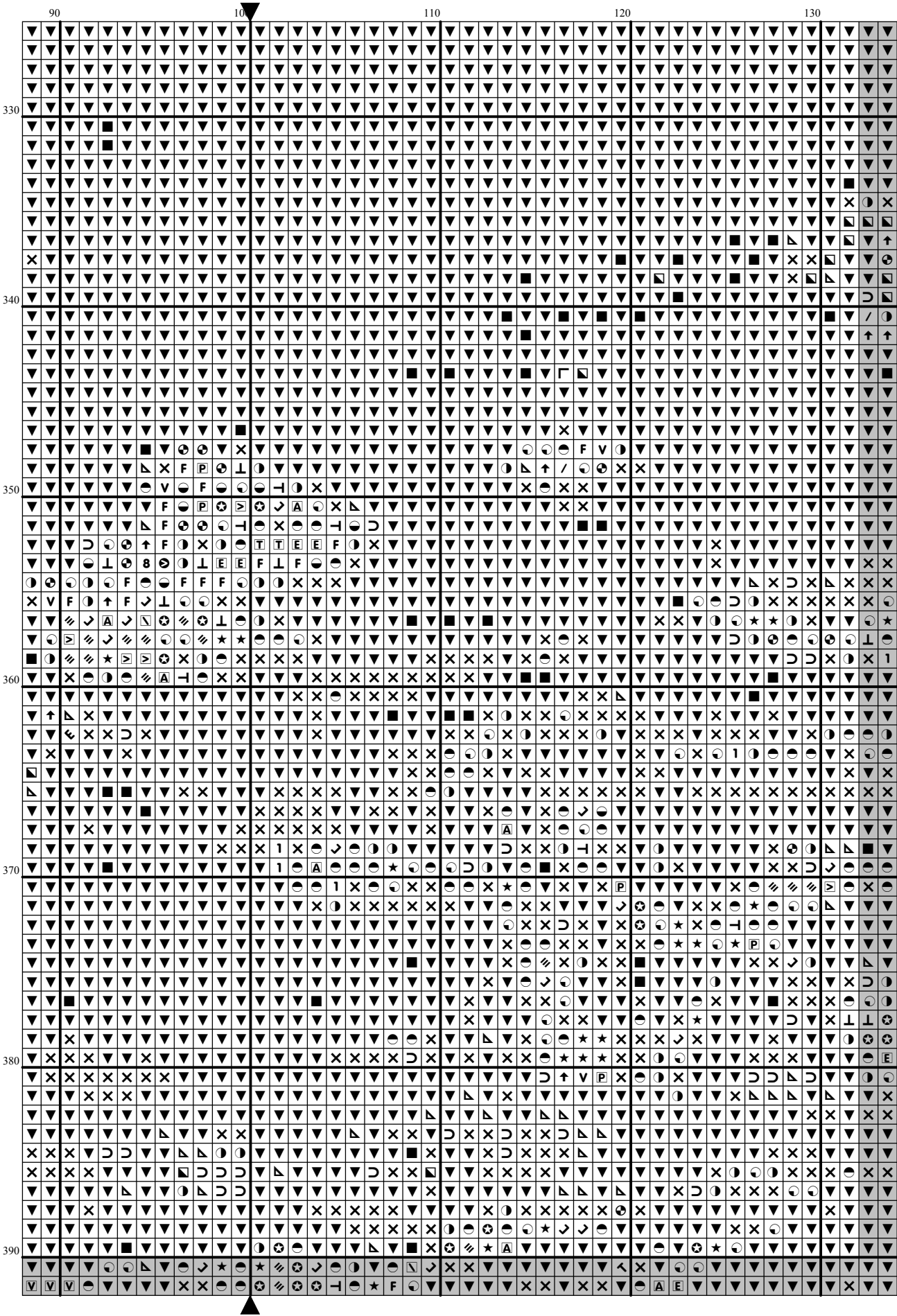


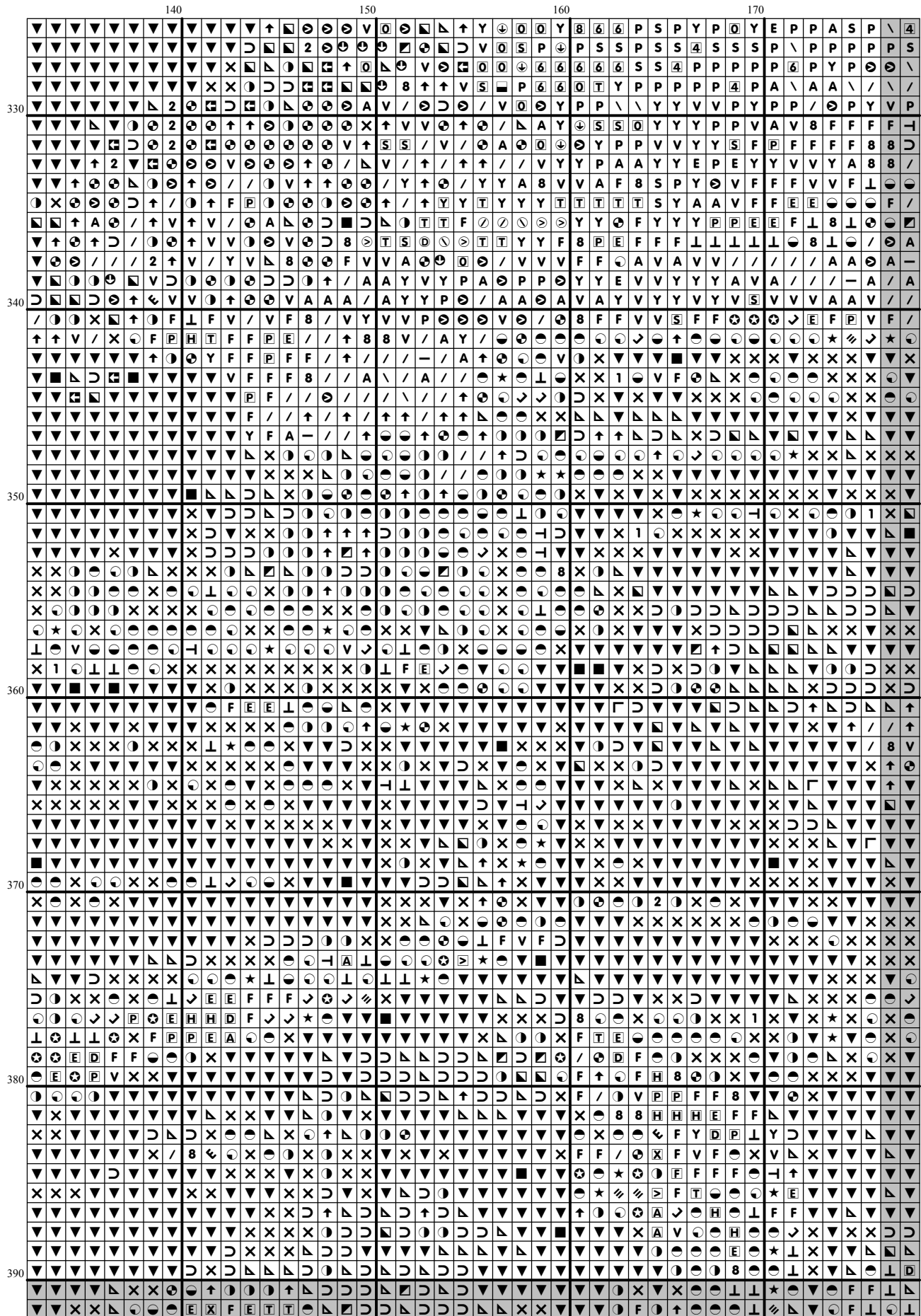




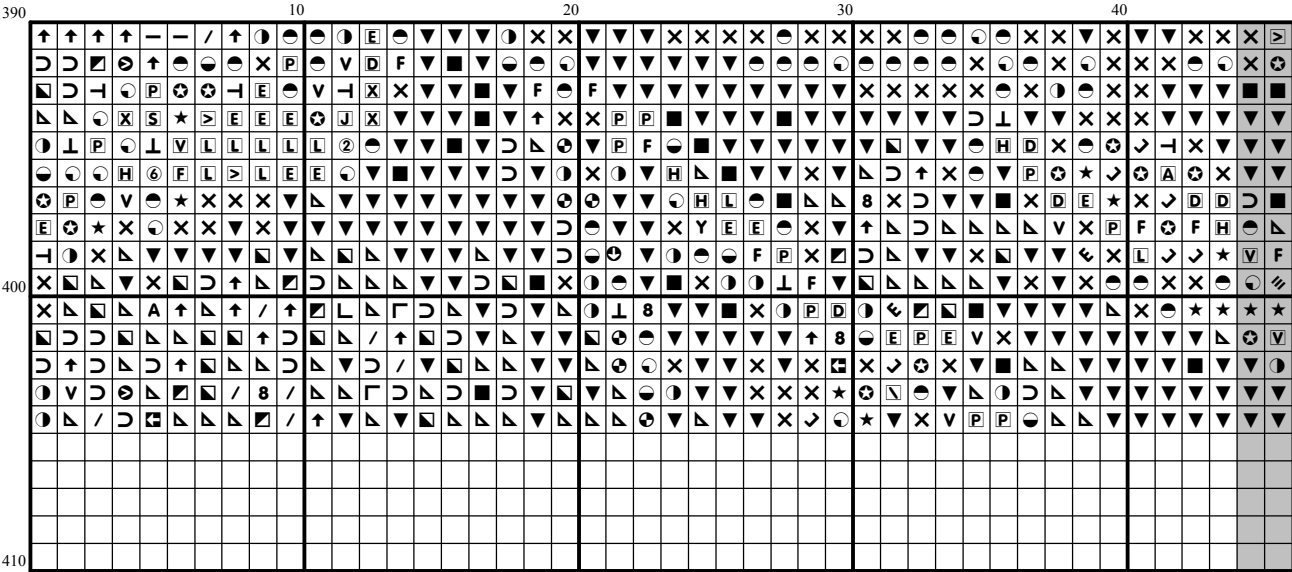


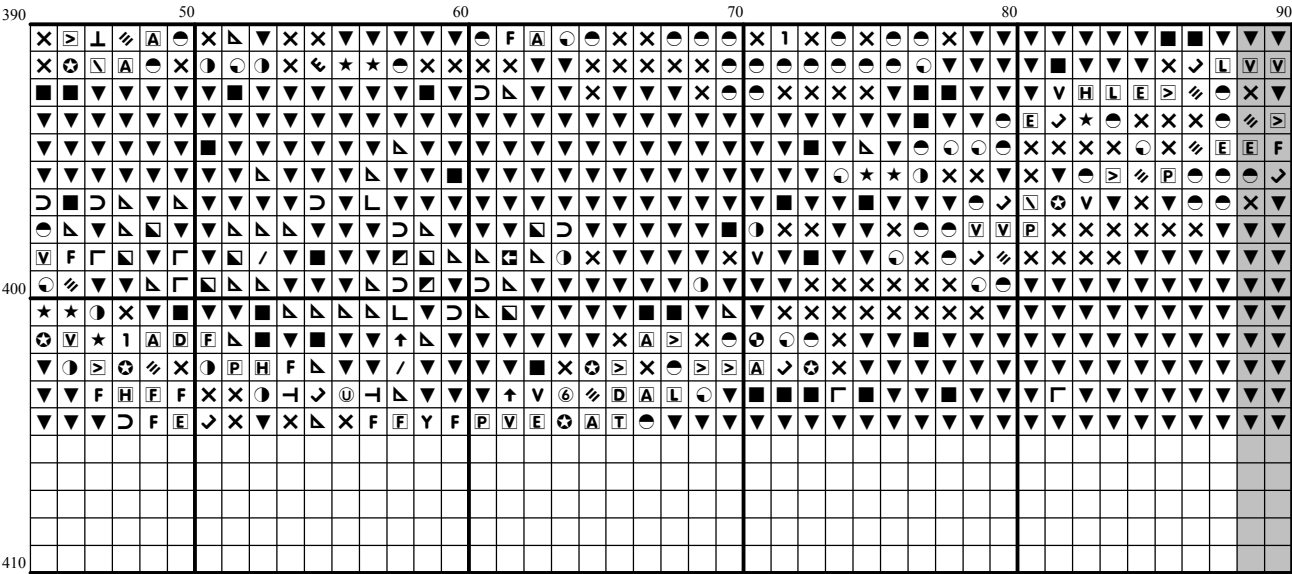


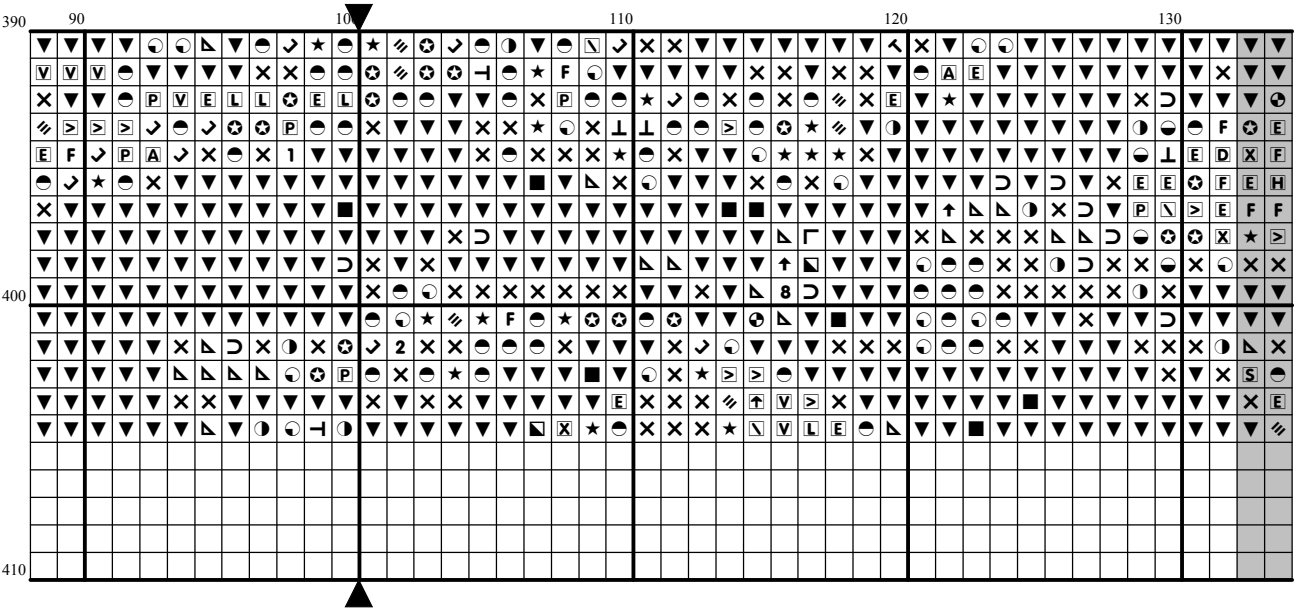


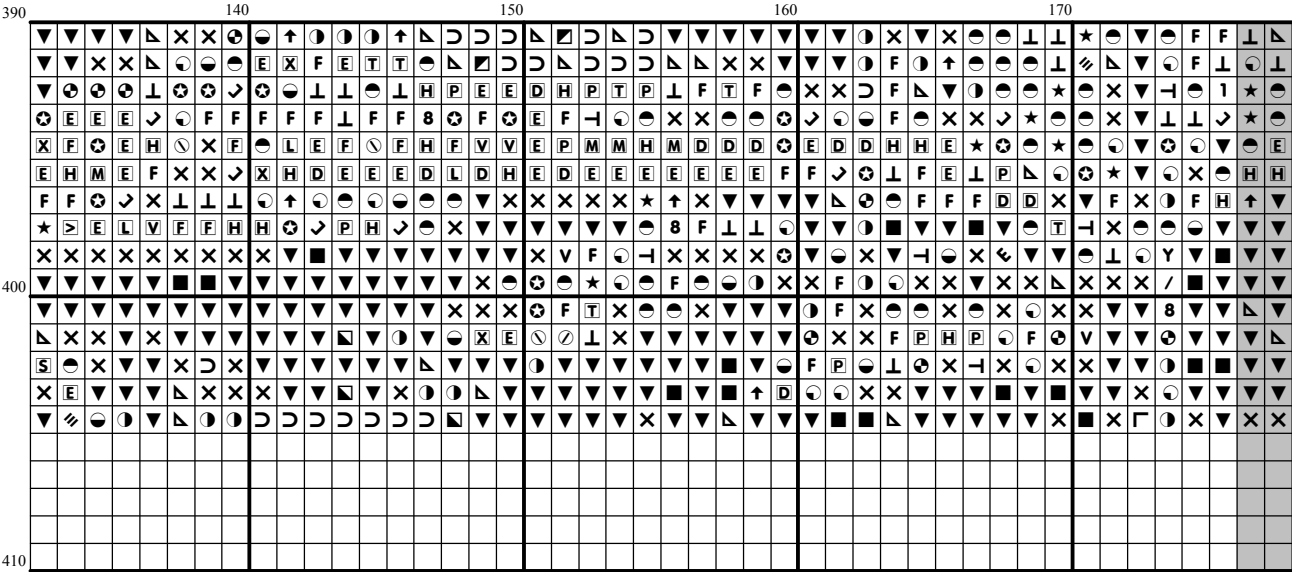


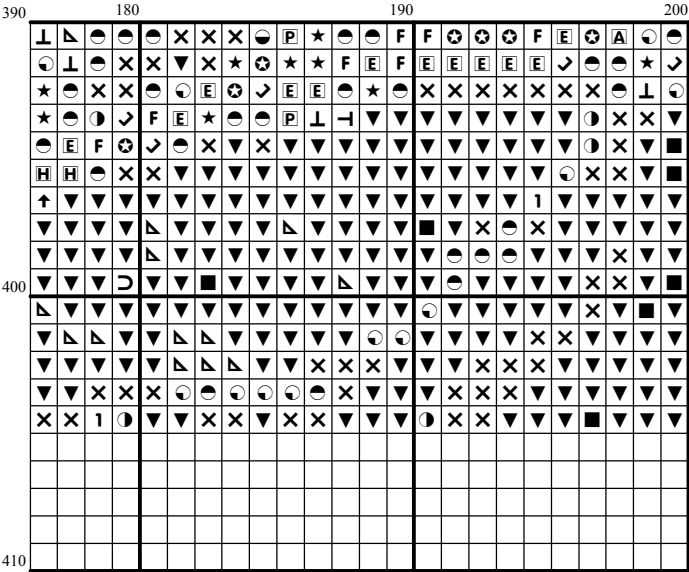
[illegible]











Instructions and Symbol Key for Design "po407 October"













Fabric: 14 count Cream Aida

Stitches: 200 x 405 **Size:** 14.29 x 28.93 inches or 36.29 x 73.48 cm

Colours: DMC

Use 2 strands of thread for cross stitch

Sym	No.	Colour Name	Sym	No.	Colour Name
✕	154	Prune rose	■	158	Deep mauve
2	165	Pale moss green	H	167	Dark mustard brown
D	168	Mouse grey	2	169	Pewter grey
★	221	Mars red	W	223	Medium dusty pink
▼	310	Black	┐	315	Antique lilac
4	317	Steel grey	8	318	Granite grey
3	320	Fern green	^	327	Dark violet
▷	355	Brown red	V	356	Medium terracotta
7	368	Nile green	☆	400	Brown
Y	407	Clay brown	⊞	413	Iron grey
1	414	Lead grey	N	415	Chrome grey
E	420	Hazelnut	└	433	Chocolate brown
L	435	Tabacco brown	⑥	436	Teddy brown
Ⓟ	437	Camel	Ⓢ	471	Tarragon green
S	502	Blue green	Ⓜ	520	Dark fern green
6	522	Trellis green	A	523	Ash green
7	524	Light grey green	⊙	535	Stone grey
↙	550	Blackcurrant	⊙	612	String brown
⓪	613	Rope brown	Y	640	Green grey
⊞	644	Light green grey	8	648	Pepper grey
Y	676	Savannah gold	⊙	677	Sand gold
⓪	712	Cream	6	727	Primrose yellow
P	728	Hops yellow	⓪	729	Honey gold
8	730	Khaki green	⓪	733	Golden green
⊞	734	Light Olive green	V	738	Sahara cream
4	739	Dune cream	U	758	Dawn rose
L	762	Pearl grey	M	775	Summer rain blue
⊙	779	Sepia mauve	D	780	Chestnut tree brown
M	782	Wicker brown	⊙	801	Mink brown
⓪	822	Cotton cream	┐	823	Blueberry blue
⓪	833	Brass	⓪	834	Light brass
⓪	838	Dark wood	P	842	Beige rope
F	869	Coffee brown	⓪	918	Dark red copper
N	919	Red copper	⓪	920	Ochre copper
①	921	Burnt ochre orange	4	922	Terracotta
2	927	Oyster grey	A	928	Light pearl grey
L	934	Algae green	■	935	Undergrowth green
—	936	Oaktree moss green	\	937	Moss green
⓪	938	Espresso brown	■	939	Dark navy blue
V	945	Eggshell cream	7	966	Baby green
2	976	Nutmeg brown	N	977	Caramel brown
A	3011	Artichoke green	↑	3021	Cliff grey
⓪	3022	Elephant grey	⓪	3023	Light platinum grey
⓪	3033	Antique silver	⓪	3041	Medium lilac
⓪	3042	Lilac	Y	3047	Silver birch beige
5	3052	Silver green	7	3064	Cinnamon brown
H	3072	Pale pearl grey	⓪	3078	Pale yellow
E	3346	Hunter Green	⓪	3348	Lettuce heart green

P	3363	Herb green		3371	Ebony
	3687	Raspberry mauve		3712	Blush pink
A	3721	Earth pink	2	3740	Dark antique violet
	3752	Light porcelain blue		3756	Cloud blue
P	3772	Rosy tan	W	3774	Pale desert sand
	3777	Leather red	/	3787	Wolf grey
	3799	Anthracite grey		3802	Aubergine mauve
J	3811	Waterfall blue		3815	Eucalyptus Green
	3816	Snake green		3821	Straw yellow
	3822	Light straw yellow		3823	Ivory
J	3826	Golden brown		3827	Beech brown
X	3828	Oaktree brown	F	3829	Ochre brown
	3830	Red terracotta	1	3834	Grape
	3852	Mustard yellow		3857	Dark red wine
	3858	Medium red wine	V	3860	Taupe mauve
	3861	Light taupe	T	3863	Otter brown
	ECRUT	ECRUT			

This chart has been designed and printed with our best intentions of being without mistakes. However, the possibility of human error, printing mistakes or the variation of individual stitching does exist, and we regret that we cannot be responsible for this.

Note: The shaded blocks on the chart represent overlapping stitches.
 Copyright © Classic Cross Stitch 2004 All rights reserved.